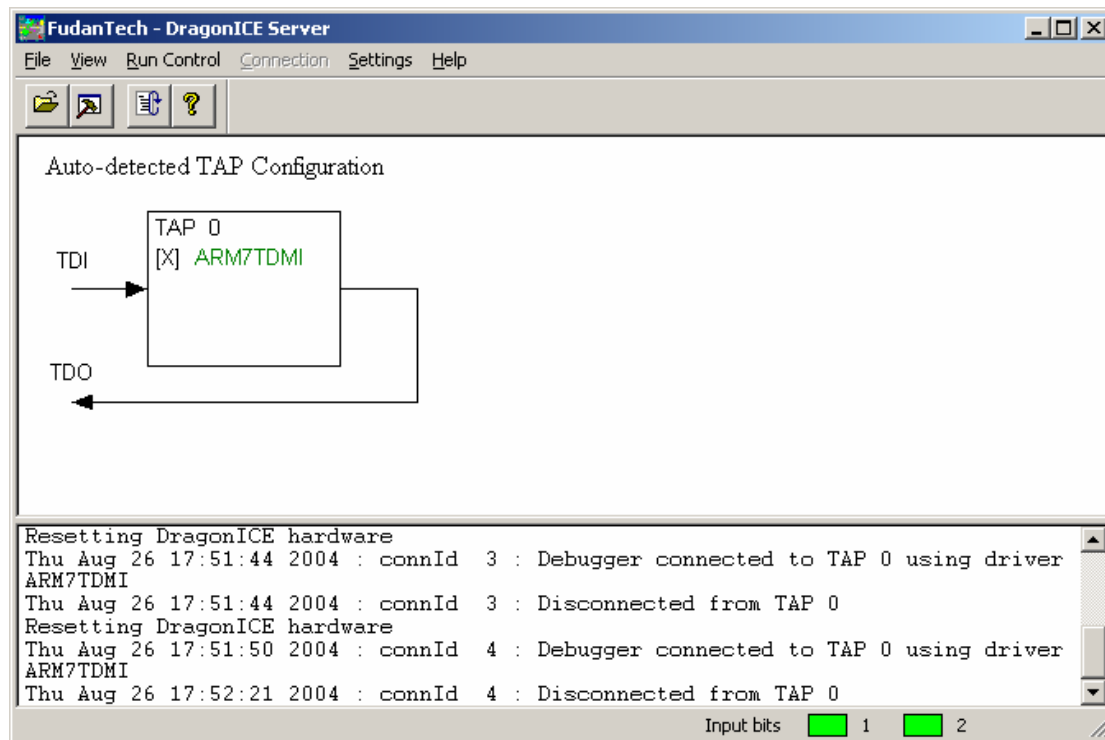


Dragon-ICE Connecting with RealView Developer Suite

1. Start Dragon-ICE Server

You first install Dragon-ICE Server (We provide), then start it, as following.

Connect Target board, click Auto-configure or Manual configure target, as follow (target is ARM7TDMI)



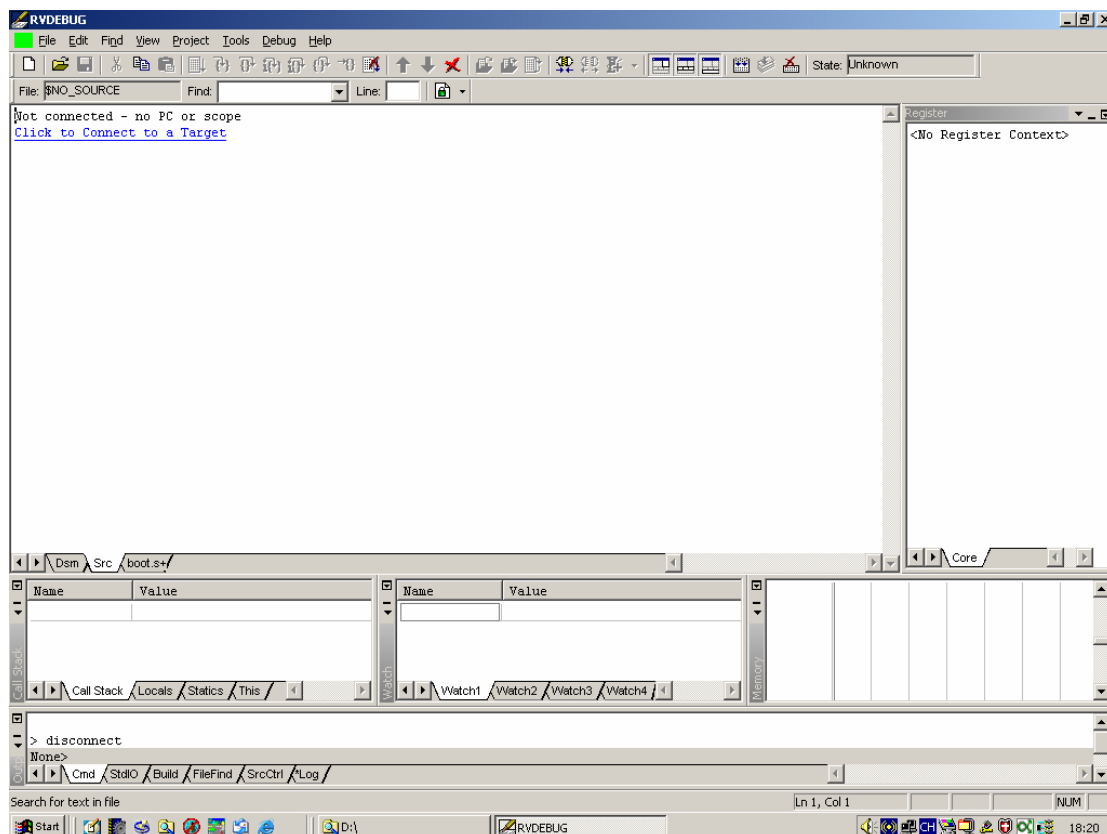
2. Start RealView Developer Suite and Connect Dragon-ICE

RealView Developer Suite includes two Debugger: AXD debugger and Realview Debugger.

AXD debugger is in ADS which can connect Multi-ICE and Dragon-ICE, so I do not explain it.

Here we use RealView Debugger to connect Dragon-ICE.

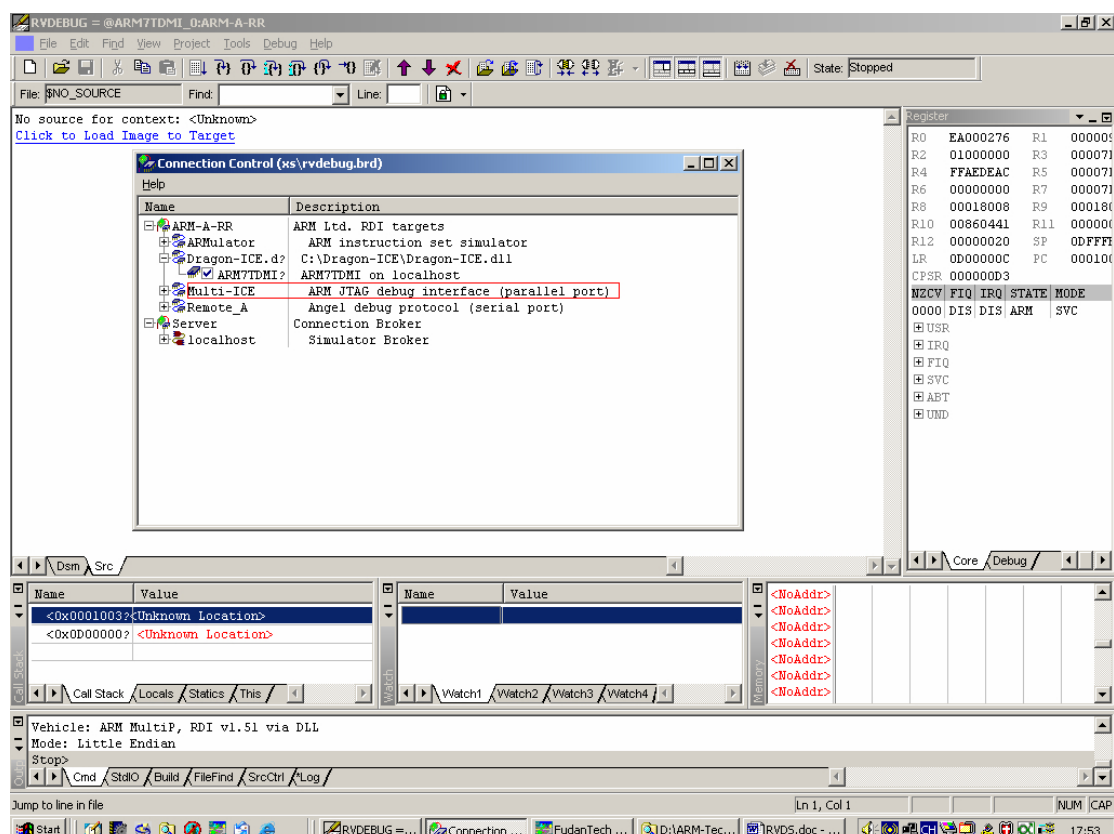
First Start RealView Debugger. then it display message "Click to Connect to a Target ", as follow:



After Click it, following window is display:

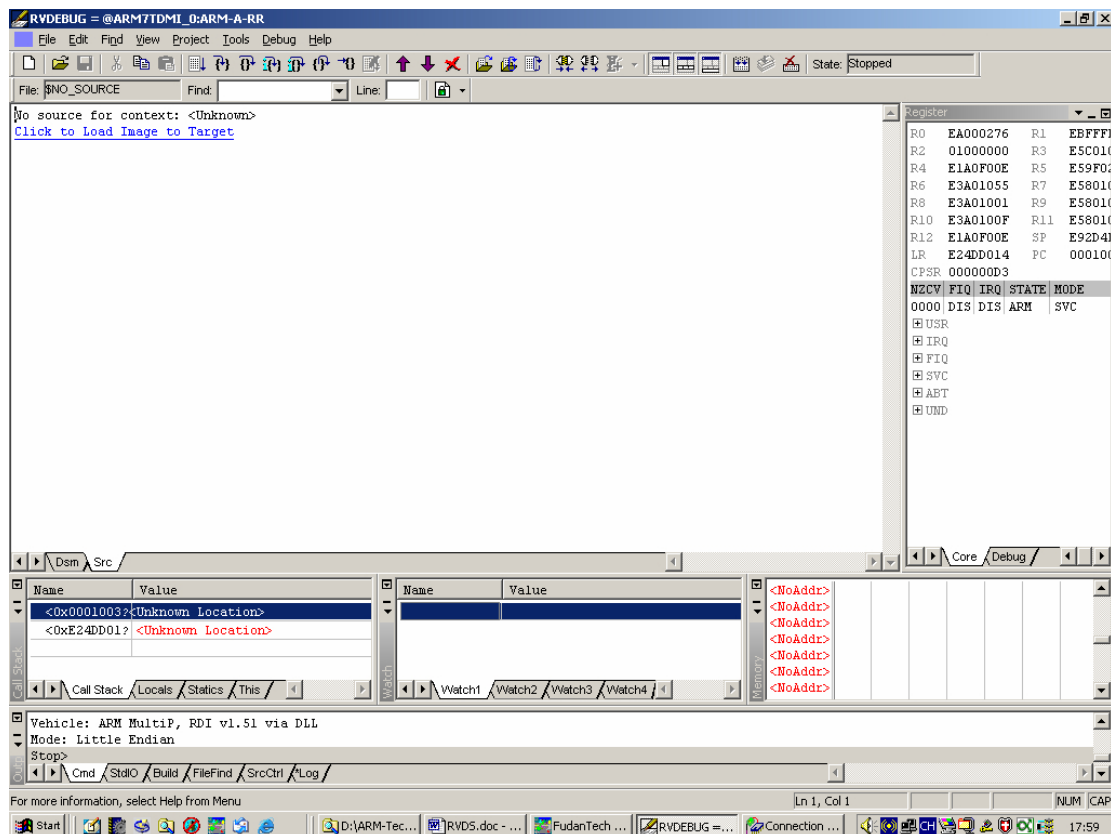
In upper window, you can add Dragon-ICE.dll in connecting window, you can also use Multi-ICE to connect target directly.

Click Dragon-ICE or Multi-ICE line, target display under it. You can click target, so you wait moment, and connecting is OK.

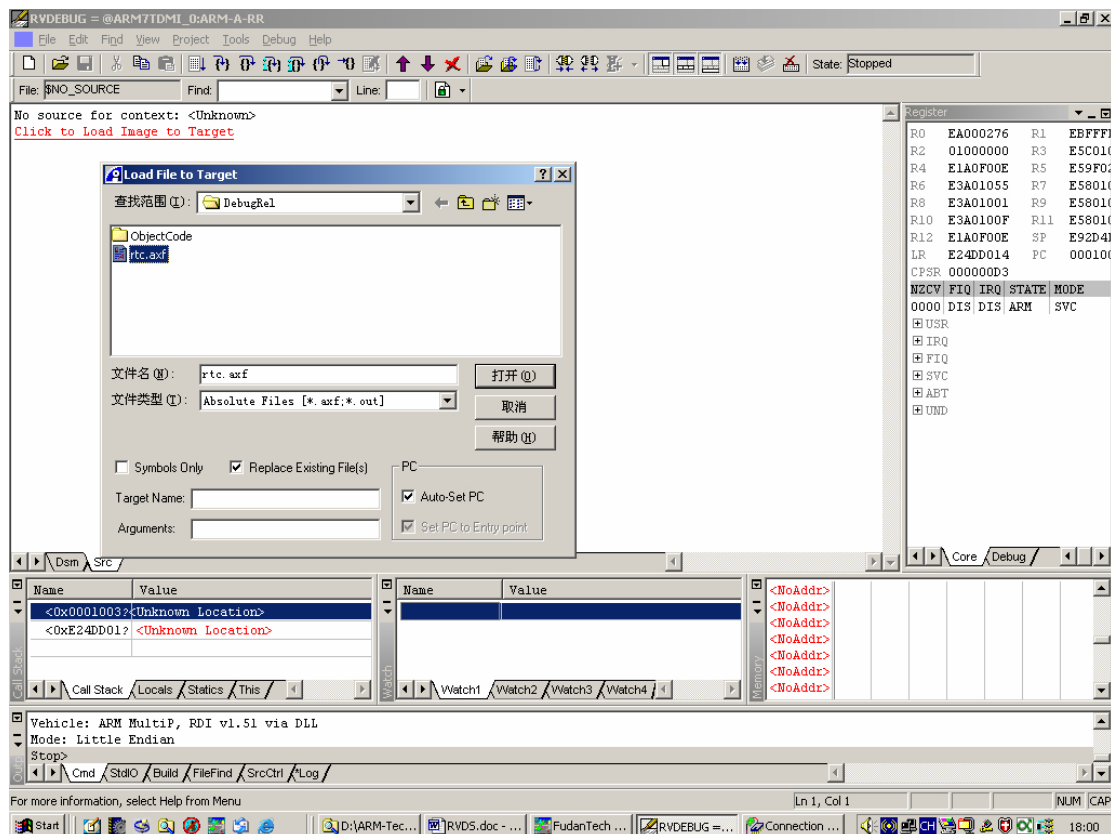


3. Download program image to debug it

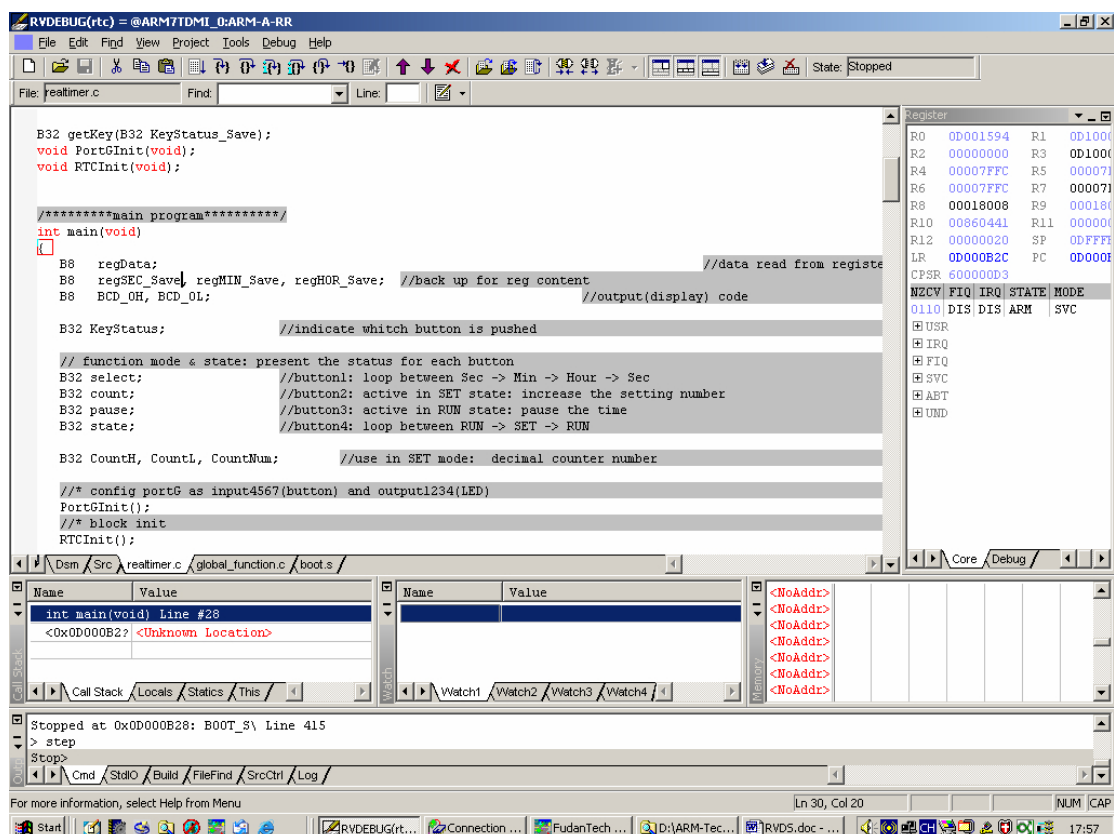
After connecting is Ok, debugger window displays message “click to load Image to Target”, as follow:



So you can load your program Image into target, as follow:



After loading one image, you run it to debug it, as follow:



This is process of Dragon-ICE connecting with RealView Developer Suite.

If connecting is Ok, later you only start Dragon-ICE Server and RealView Debugger, connecting is auto.

If you have any question, please contact with FudanTech CO.,Ltd
Tech-Support E-mail: tech-support@fudantech.com